



**2013 COLDWATER
HERITAGE PARTNERSHIP
GRANT**

LACKAWANNA RIVER TRIBUTARIES
STUDY/PLAN

Cheryl Nolan
Watershed Specialist
Lackawanna County Conservation District



Coldwater Heritage Partnership Grant
Final Report
June 25, 2014

TABLE OF CONTENTS

I.	Abstract	2
II.	Methodology	5
III.	Results	5
A.	Chemistry	5
1.	Equipment	5
2.	Results Summary	5
B.	Benthic Macroinvertebrates	7
C.	Fish Population – Leggetts Creek (see Appendix A for complete report)	9
D.	Habitat Assessment (see Appendix B for complete assessment)	9
IV.	Conclusion	11
V.	Plan	11
VI.	Appendix A (Chemistry Data)	15
VII.	Appendix B (Benthic Macroinvertebrate Indexes)	18
VIII.	Appendix C (Fishery Survey, Leggetts Creek)	20
IX.	Appendix D (Habitat Assessments)	25
X.	References	37



I. Abstract

In 2011 Lackawanna County Conservation District (LCCD) requested the assistance of Trout Unlimited’s Eastern Abandoned Mine Technical Assistance Program, in conducting a biological assessment of the Lackawanna River. The District partnered with DCNR, LRCA and the Lackawanna Valley Chapter of Trout Unlimited in this effort. Nine sites along the Lackawanna and three sites along Roaring Brook (a major tributary of the river) were assessed for habitat, fish (presence and absence) and macroinvertebrates. The habitat was surveyed using DEP’s Water Quality Network Habitat Assessment Form. Benthic Macroinvertebrates were collected using DEP’s Instream Comprehensive Evaluation (ICE) protocol. The Fishery Survey was conducted using a Smith-Root, Model LR-24 backpack electrofisher. The final report was issued in September of 2012.

The following is a list of the sites that were surveyed and their approximate locations:

Site Number	Description	Latitude	Longitude
1	Forest City at American Water Plant	41.659758	75.463561
2	Carbondale Industrial Park	41.586904	75.491003
3	Behind LCCD	41.547446	75.53044
4	Jermyn at Powdermill Dam	41.498087	75.539513
5	Winton Street	41.482127	75.550378
6	Mellow Park, Peckville	41.476439	75.581505
7	Parker Street, near LRCA Office	41.439376	75.640699
8	Davis Street	41.384866	75.703603
9	Elm Street Bridge	41.399228	75.676514
10	Nay Aug Park on Roaring Brook	41.406275	75.63805
11	Roaring Brook at Chico's	41.404925	75.572253
12	Roaring Brook at Aberdeen Road	41.340478	75.515347

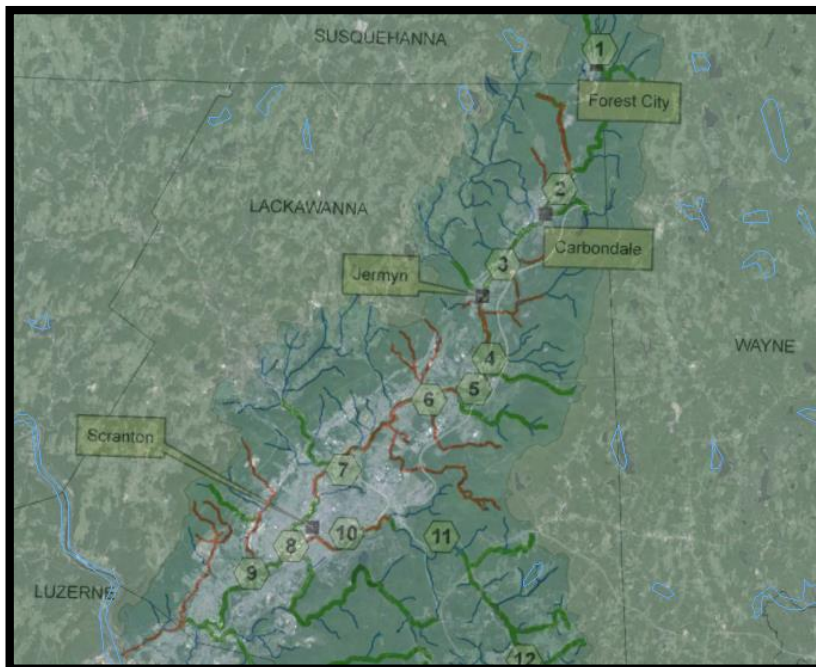


FIGURE 1. SITES FROM 2011 STUDY OF THE LACKAWANNA RIVER
 Overlaid on Map of Land Use
 (Gray area shows developed areas of study.)



Coldwater Heritage Partnership Grant
Final Report
June 25, 2014

Results of the 2011 assessment suggest that sites 7, 8 and 9 represent the most degraded portion of the river. Through the Coldwater Conservation Planning Grant, LCCD has performed a focused assessment that sought to identify the source(s) of this measured degradation of the Lackawanna River. Building on the 2011 assessment, the District continued this effort by collecting chemistry data, benthic macroinvertebrate data and habitat information on the tributaries located within the most degraded portion of the Lackawanna River and used this information to identify the source(s) of any degradation and to create a plan to minimize or eliminate those sources. Our hypothesis was that urban runoff and AMD contributed to the degradation of the river. For example, Eddy Creek runs above abandoned mine pools and, during rain events, possibly carries highly acidic water to the river. Additionally, all of the streams (listed below) flow within very urbanized watersheds and are not diluted to any degree by cleaner mountain runoff, potentially adding to the contamination of the river.

The following tributaries and locations indicate where chemistry data was collected:

Site Number	Description	Stream Type	*Latitude	*Longitude
1	West Branch Tinklepaugh Creek	Intermittent	41.493069	75.591259
2	Hulls Creek	Perennial	41.492683	75.619283
3	Eddy Creek	Ephemeral	41.445380	75.605979
4	Leggett’s Creek	Perennial	41.443691	75.646085
5	Unnamed, Enterprise St.	Intermittent	41.455330	75.621428
6	Unnamed, Woodlawn St.	Intermittent	41.452346	75.622909

*The latitudes and longitudes listed are the specific sites where chemistry was monitored under the CCP Grant. Some locations have changed from the originally proposed sites due to further scrutiny of access points and existing flow conditions.

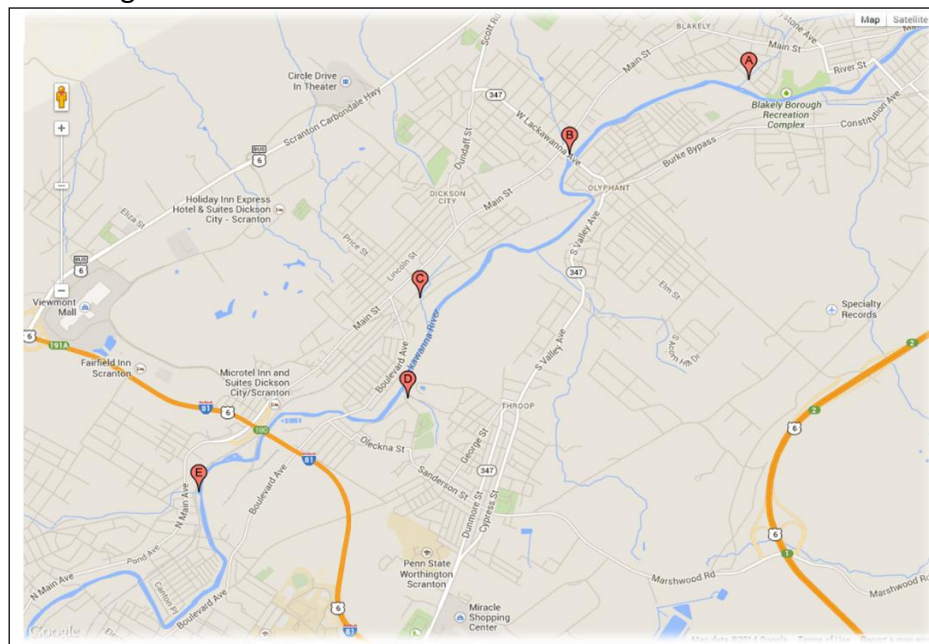


FIGURE 2. MAP OF MONITORING SITES



Coldwater Heritage Partnership Grant
Final Report
June 25, 2014

Tributaries 5 and 6 were only monitored through December of 2013. They are intermittent streams as was West Branch Tinklepaugh Creek. All three were dry for much of the summer. As expected these streams contributed very little, in volume of water, to the river during the study period. Eddy Creek was dry throughout the monitoring period and the single set of data was taken after a rain event. The sample was collected from standing water. Eddy Creek, an ephemeral stream, originates from Marshwood Reservoir in Olyphant, Lackawanna County. The PA DEP plans to excavate, backfill and grade abandoned mine lands featured on 25 acres, as well as restore 3.4 miles of Eddy Creek, lessening potential flooding hazards and thereby improving water quality in its watershed. Only Hulls and Leggetts continually ran during our monitoring period. West Branch Tinklepaugh Creek was dry from July through October of 2013 (See Appendix B). 2012 was an unusually dry year. Nearing the end of the summer months, the monitoring region was down 11 inches of precipitation from the average year's precipitation.

Of the tributaries in the study, Leggetts Creek contributed by far, the highest volume of water to the Lackawanna River at approximately 64%, considering the contribution of volume of water and chemistry results, we concluded that Leggetts Creek was contributing most of the degradation to the studied portion of the river. Therefore, we began focusing our attention on Leggetts Creek and will continue, as part of this plan.

In 2012, the South Abington Sewer Authority began state and federally mandated upgrades to the sewage treatment facility, including the sewer lines, located along Leggetts Creek. The project includes increasing the plant's hydraulic capacity to avoid system overloads that have led to untreated wastewater and harmful nutrients being discharged into Leggett's Creek and installing new sewer lines that run parallel to and cross under the creek several times (This portion of the improvement project is complete.). All of the improvements are due to be completed by the end of 2014. In addition, all of the developed land and impervious surfaces surrounding the creek from Clarks Green, through Clarks Summit, South Abington and Dickson City; including the PA Turnpike to the north and Routes 81 and 6/11 which run parallel to the stream, make the potential for contamination from urban runoff extremely high.

Our results show that Leggetts Creek has elevated levels of Total Dissolved Solids (TDS), Electrical Conductivity (EC) and pH. (TDS measures the dissolved solid in the water and EC measures the amount of electrical conductivity in the water or metals that will conduct electricity.) Although the average salinity was well within acceptable limits of < 1000 ppm (parts per million), actual results averaged 345 ppm. The maximum reading was 435 ppm; it would be beneficial to take steps to reduce salinity levels.

Therefore our plan is to continue to monitor Leggetts Creek until well after the completion of the upgrades to the treatment plant in order to verify what is expected to be a considerable improvement in water quality. We began testing for TDS, EC and salinity above and below the treatment plant in April 2014. If improvements aren't observed to an acceptable level, the District will then begin testing for more specific contaminants (e.g. aluminum, magnesium, lead, nitrates and phosphates etc.). However, we expect that we will see improvements.



II. Methodology

The District collected chemistry data and conducted habitat assessments (using **PA DEP's Water Quality Network Habitat Assessment Form**) along the six main tributaries that feed a portion of the Lackawanna River. Benthic macroinvertebrate surveys (using **DEP's Instream Comprehensive Evaluation (ICE)** protocol) were conducted on Leggetts Creek, Hulls Creek and two locations along the river within the monitoring area. Leggetts and Hulls were the only two streams capable of supporting aquatic life. Chemistry data was collected approximately once per month, for a period of one year and habitat assessments and benthic macroinvertebrate surveys were conducted once during this one year period. The habitat assessments were conducted in the spring of 2013 and the macro collection was conducted in November of 2013.

As shown in the map above, Site #7 is centrally located in the portion of the river that is most developed. Runoff from these developed areas is believed to be the major cause of degradation in the Lackawanna River.

III. Results

A. Chemistry

1. Equipment

Meters were chosen over titration methods in the interest of time constraints and maximizing accuracy of the data. If meters weren't operating, titration methods were used. The following is a list of the meters used:

1. *LaMotte Tracer Pocketester, Code 1749, Salt, TDS, EC, Temp. – Removed from service in July. Replaced by #3.
2. **Extech Instruments, Dissolved Oxygen, DO600, ExStik II- Removed from service
3. Hanna Waterproof Combo Tester for pH, EC, TDS, Temp.
4. *Oakton Waterproof pHTestr 30-Replaced by #3 in July

****Due to multiple failures of the monitoring equipment, replacements had to be introduced during the 12 month monitoring period. All precautions were taken to ensure continued accuracy.***

*****Due to inconsistent performance and eventual failure of D.O. meter it was removed from service in February 2013. Please consider this while reviewing the data.***

2. Results Summary

The following tables show summaries of the chemistry data collected from March 2013-March 2014 (for complete data see Appendix B):



Coldwater Heritage Partnership Grant
 Final Report
 June 25, 2014

West Branch Tinklepaugh Creek (Intermittent)-Site 1- Chemistry Data_41.493069, -75.591259; Elevation: 310 MASL				
	Avg.	Min	Max	STDEV
EC (µS/cm)	28.69	14.00	49.50	11.64
TDS (mg/L)	13.86	7.00	20.00	5.84
pH	7.25	6.38	7.95	0.50
DO (%)	133.70	83.06	172.40	37.82
Temp. (°C)	8.75	3.28	18.08	5.24
Salinity (ppm)	10.00	10.00	10.00	0.00
Surrogate St. Flow (ft ²)	1.22	0.00	2.64	1.09

Table 1- WBTC Chemistry Data

Hulls Creek (Perennial)-Site 2-Chemistry Data_41.492683, 75.619283; Elevation: 415 MASL				
	Avg.	Min	Max	STDEV
EC (µS/cm)	283.45	179.50	679.00	133.21
TDS (mg/L)	167.81	50.00	490.00	110.87
pH	7.60	6.82	8.07	0.34
DO (%)	115.69	30.80	249.02	59.11
Temp. (°C)	11.34	2.17	21.64	6.96
Salinity (ppm)	136.37	70.95	310.00	76.54
Surrogate St. Flow (ft ²)	2.75	1.07	6.38	1.55

Table 2- Hulls Ck. Chemistry Data

Eddy Creek (Ephemeral)-Site 3-Chemistry Data_41.445380, -75.605979; Elevation: 271 MASL				
	Avg.	Min	Max	STDEV
EC (µS/cm)	203.50	203.50	203.50	N/A
TDS (mg/L)	140.00	140.00	140.00	N/A
pH	6.99	6.99	6.99	N/A
DO (%)	66.50	66.50	66.50	N/A
Temp. (°C)	23.42	23.42	23.42	N/A
Salinity (ppm)	100.00	100.00	100.00	N/A
Surrogate St. Flow (ft ²)	N/A	N/A	N/A	N/A

Table 3- Eddy Ck. Chemistry Data

Legget's Creek (Perennial)-Site 4-Chemistry Data_41.443691, -75.646085; Elevation: 221 MASL				
	Avg.	Min	Max	STDEV
EC (µS/cm)	677.54	538.00	979.50	141.13
TDS (mg/L)	411.96	50.00	680.00	168.92
pH	8.20	7.64	9.23	0.49
DO (%)	119.38	28.95	236.75	61.33
Temp. (°C)	11.62	0.97	22.64	7.27
Salinity (ppm)	345.00	280.00	435.00	66.14
Nitrates (mg/L)	2.50	2.50	2.50	N/A
Phosphates (mg/L)	1.58	1.58	1.58	N/A
Surrogate St. Flow (ft ²)	15.38	4.69	41.25	8.66

Table 4- Leggetts Ck. Chemistry Data

Un-Named Trib (Intermittent)-Site 5-Chemistry Data_41.45533, -75.621428; Elevation: 227 MASL				
	Avg.	Min	Max	STDEV
EC (µS/cm)	171.60	115.00	235.00	45.98
TDS (mg/L)	111.60	58.00	160.00	39.02
pH	7.68	7.21	8.27	0.39
DO (%)	107.20	74.28	157.10	40.05
Temp. (°C)	14.08	7.30	19.81	4.51
Salinity (ppm)	87.50	70.00	110.00	17.08
Surrogate St. Flow (ft ²)	1.29	0.00	4.46	1.59

Table 5- Un-named Trib. #5 Chemistry Data

Un-Named Trib (Intermittent)-Site 6-Chemistry Data_41.452346, -75.622909; Elevation: 225 MASL				
	Avg.	Min	Max	STDEV
EC (µS/cm)	167.07	116.00	198.40	27.21
TDS (mg/L)	104.63	57.00	134.00	24.52
pH	7.43	6.20	8.75	0.80
DO (mg/L)	104.63	43.45	139.00	35.18
Temp. (°C)	18.23	7.60	25.06	5.52
Salinity (ppm)	87.50	80.00	100.00	9.57
Surrogate St. Flow (ft ²)	2.65	0.00	6.62	2.47

Table 6- Un-named Trib. #6 Chemistry Data

The following parameters were used to determine acceptable levels of chemistry. These parameters were taken from the *PA Fish and Boat Commission's Pond and Stream Guide*:



Coldwater Heritage Partnership Grant
Final Report
June 25, 2014

Parameter	*Normal Values
EC (Conductivity)	150 to 500 μ S/cm (microsiemens per centimeter)
TDS	50 to 250 mg/L
pH	6.5-8
DO	125% and greater-Too High 80-124%-Excellent 60-79%-Ok Below 60%-Poor
Temperature	Optimum for spawning trout 48 oF (8.8 °C) 52-61 °F (11-16 °C) - Good
Salinity	<1000 ppm
Nitrates	<1 mg/L-good (naturally occurs) <0.06 mg/L-ideal
Phosphates	<0.01 mg/L-ideal for small streams

Table 7- Acceptable Chemistry

B. Benthic Macroinvertebrates

The Index of Biological Integrity, or IBI, is a scoring system used to measure strong responses to human disturbance, or pollution, in streams. PA DEP’s Index of Biological Integrity (IBI) uses Beck’s Index, EPT Taxa Richness, Total Taxa Richness, Percent Intolerance Index, Shannon Diversity and Hilsenhoff Biotic Index. These indexes are calculated in a standard formula to come up with the IBI. (See Appendix B for more on these indexes.)

The following table shows the locations of the benthic macroinvertebrate collection sites:

Macro Collection Site Locations	Latitude	Longitude
Hulls A1	41.486220	-75.614279
Hulls B1	41.500988	-75.625081
Hulls C1	41.506456	-75.624096
Leggetts A1	41.443627	-75.646198
Leggetts A2	41.496013	-75.665720
Leggetts D1	41.449629	-75.675704
Lackawanna D1	41.437920	-75.641142
Lackawanna E2	41.399230	-75.676514

Table 8-Macro Collection Sites

The follow tables show the results of the benthic macroinvertebrate survey. Three sites were surveyed on both Hulls Creek and Leggetts Creek. Two sites were surveyed on the Lackawanna River.

<i>Hulls Creek</i>	<i>Site A1</i>	<i>Site B1</i>	<i>Site C1</i>
Beck’s Index	26.00	14.00	10.00
EPT Taxa Richness	16.00	4.00	9.00
Total Taxa Richness	24.00	7.00	14.00
Percent Intolerance Index	53%	2.5%	18.8%
Shannon Diversity	2.05	1.45	1.54
Hilsenhoff Biotic Index	2.70	0.28	2.50
IBI Score	74.96	38.79	47.45



Coldwater Heritage Partnership Grant
Final Report
June 25, 2014

Table 9- Macro Results-Hulls Ck.

<i>Leggetts Creek</i>	<i>Site A1</i>	<i>Site A2</i>	<i>Site D1</i>
Beck's Index	2.00	3.00	6.00
EPT Taxa Richness	6.00	4.00	6.00
Total Taxa Richness	11.00	10.00	11.00
Percent Intolerance Index	7.1%	4.2%	7.9%
Shannon Diversity	0.91	0.70	2.01
Hilsenhoff Biotic Index	2.85	1.24	1.56
IBI Score	33.09	31.45	43.39

Table 10- Macro Results-Leggetts Ck.

<i>Lackawanna River</i>	<i>Site D2</i>	<i>Site E2</i>
Beck's Index	2.00	2.00
EPT Taxa Richness	6.00	8.00
Total Taxa Richness	18.00	22.00
Percent Intolerance Index	32.1%	19.2%
Shannon Diversity	1.90	1.86
Hilsenhoff Biotic Index	4.86	5.78
IBI Score	43.20	42.30

Table 11- Macro Results-Lackawanna River

Biological indexes were calculated for each sample site. IBI scores highlighted in green indicate that the site meets the benchmark for aquatic life use. Red highlights indicate sites that do not meet the benchmark for aquatic life use and that fewer than 160 individual benthic macroinvertebrates were present in the sample at the site, therefore IBI scores should be interpreted cautiously. Sites highlighted in grey also do not meet the benchmark for attaining life use however, do have more than 160 individuals.

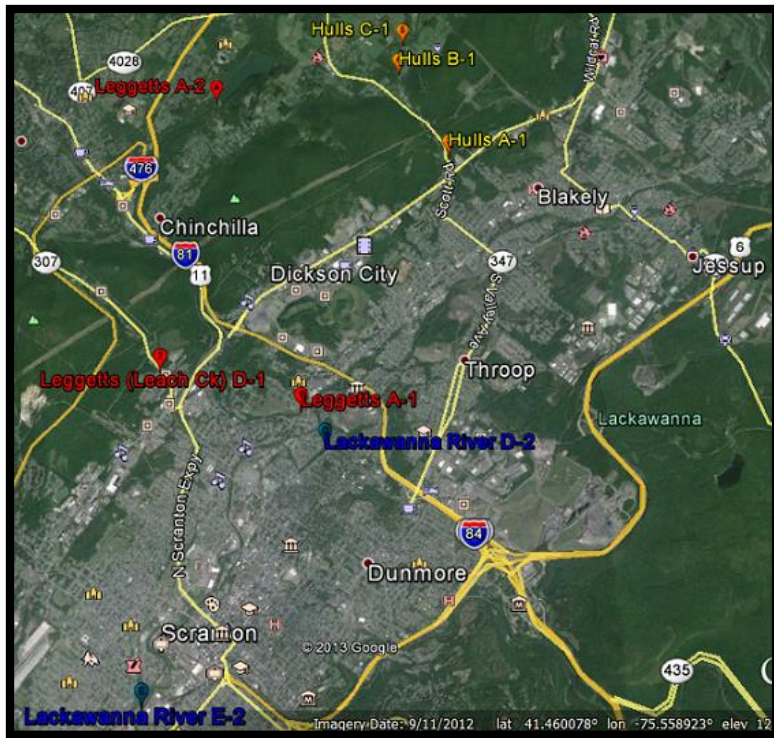


FIGURE 3. MACRO COLLECTION SITE LOCATIONS

This map shows all taxa collection locations in relation to urbanized development and impervious surfaces.

C. Fish Population – Leggetts Creek

(see Appendix A for complete report)

A fish population survey was conducted on Leggetts Creek by PA Trout Unlimited AMD Technical Assistance Program on November 15, 2013. (This survey was not part of the original proposal however, it was added during the study period.)

A total of nine (9) brown trout were collected during the fishery survey. Brown trout ranged in total length from 84 to 316 mm with a mean of 139 mm. Mean stream width was 5.45 meters. Density of brown trout was 164 trout per hectare. **Figure 2 of Appendix A** shows the size class distribution of brown trout captured within the survey reach. Other fish species were present, their relative abundance are shown in **Table 1 of Appendix A**. The results of the fishery survey have been sent to the Pennsylvania Fish and Boat Commission and may lead to the addition of Leggetts Creek to the “wild trout list”. This designation would include an upgrade of all of the associated wetlands to Exceptional Value by the DEP and offer the stream additional protections. Although, as of the writing of this report, we have received no notification of this upgrade.

D. Habitat Assessment (see Appendix B for complete assessment)

Habitat Assessments were conducted on August 7, 2013 when vegetation was at its peak and where chemistry monitoring took place. Therefore, these assessments are not representative of the entire stream length. Refer to coordinates in Section I, Abstract for exact locations. See Section IX, Appendix C for Habitat Assessment Field Data Sheets.



Coldwater Heritage Partnership Grant
Final Report
June 25, 2014

Habitat Assessment Scores:

Stream Number	Stream Name	Instream Cover	Epifaunal Substrate	Embedded	Velocity/Depth Regimes	Channel Alteration	Sediment Deposit	Frequency of Riffle	Channel Flow Status	Condition of Banks	Bank Vegetative Protection	Grazing or Other Disruptive Pressure	Riparian Vegetative Zone Width	TOTAL
1	*WBTC	19	19	12	19	16	11	18	8	13	18	20	19	192
2	Hulls Ck	13	9	18	5	13	19	18	8	13	13	20	10	159
3	Eddy's Ck	1	0	1	0	19	1	2	2	18	18	19	19	100
4	Leggetts Ck	16	18	18	17	18	19	17	10	19	14	17	10	193
5	#5 **UT	8	6	8	2	11	6	4	15	18	19	13	8	118
6	#6 **UT	7	11	5	3	17	11	8	8	14	19	19	7	129

Table 12- Habitat Assessment Results

*West Branch Tinklepaugh Creek

**Unnamed Tributary

Habitat Assessment Categories are as follows:

Poor: 0-55, Marginal: 56-105, Sub-Optimal: 106-155, Optimal: 156-200

Stream Habitat Assessment Rankings:

Stream #	Stream Name	Score	Habitat Assessment Ranking
1	West Branch Tinklepaugh Creek	192	Optimal
2	Hulls Creek	159	Optimal
3	Eddy's Creek	100	Marginal
4	Leggetts Creek	193	Optimal
5	Unnamed Tributary	118	Sub-Optimal
6	Unnamed Tributary	129	Sub-Optimal

Table 13-Habitat Assessment Ranking



IV. Conclusion

Leggetts Creek was found to be a major contributor to the degraded portion of the Lackawanna River as evidenced by the TDS/EC and salinity data and will require more intensive studies to determine if the waste water treatment plant improvements will, in time, reverse any contamination the sub-adequate treatment may have caused.

Additionally as expected, urbanization contributes to the degradation of the river and Leggetts Creek and to some degree all tributaries in this study. These streams are not diluted to any degree by cleaner mountain runoff. However, AMD did not seem to have much of an effect on water quality, as originally expected, as evidenced by the pH data, contained in this report.

Therefore at this time, there is no tangible evidence that would justify upgrading any of these tributaries or the affected portion of the Lackawanna River in order to provide them with increased protection.

V. Plan

Description of Leggetts Creek

Leggetts Creek is a third order stream that enters the Lackawanna River at RM 14.5, in the city of Scranton. The main stem of Leggetts Creek begins at Griffin Reservoir at 1360 feet in South Abington Township. Tributaries above the reservoir drain wetlands in South Abington and Scott Twps. From these wetland sources, the stream flows for 8.0 miles, draining an 18.46 mi² watershed and entering the river at 730 feet. Leggetts Creek has the third largest watershed of the Lackawanna River's tributary streams. Most of the stream's watershed is developed with only a few reaches of the stream still remaining in natural conditions. Leggetts Creek has twelve tributary streams which include:

Leach Creek, Summit Lake Creek, Landsdowne Creek, and small first order tributaries with local names. Like Leggetts Creek, most of these streams flow through developed areas, with generally only their upper reaches remaining in undisturbed land.

Headwater wetland and stream reaches to Leggetts Creek are generally surrounded by residential development. Though the wetlands themselves are relatively un-impacted, streams flowing from them intersect roadways and subdivisions, restricting their riparian corridor. As development in South Abington and Scott Twps. continues, the wetlands are being crowded as well. Conditions at Griffin Reservoir, the source of Leggetts Creek's main stem, are relatively undisturbed. The reservoir is the source of drinking water for residents in the stream's watershed, so access and use are restricted. A native cover of trees and understory surround the reservoir and all development is well off its banks.

A pipe discharge at the dam on Griffin Reservoir conveys flow downstream into Leggetts Creek. From the dam downstream 0.75 miles to a water supply intake pond, near I-81, the stream and its corridor remain in natural condition. The riparian zone consists mainly of old growth forest.



Coldwater Heritage Partnership Grant
Final Report
June 25, 2014

Just upstream of I-81, Leggetts Creek flows into a small pond, from which an intake pipe conveys water downstream to a wastewater treatment plant in Chinchilla. The stream then crosses under



I-81 and an entrance ramp to the North East Extension of the PA Turnpike, before flowing through South Abington Park (left). A riparian zone of native trees and understory flank the north bank. A walking trail has been developed through the park along the north bank. It extends about 0.4 miles downstream

of the park to Layton Road and receives regular use. The park, an elementary school, and PA Rtes. 6 & 11 lie off the south bank, restricting the riparian corridor.

Two second-order and one first-order tributary streams enter Leggetts Creek in the park area. The first order tributary stream originates in Scott Twp. and flows along developed areas of the township and Chinchilla Borough. Its south bank is flanked primarily by undeveloped forest, however, residential development off its north bank has encroached into its corridor. A second order tributary, Landsdowne Creek, drains areas of Clarks Summit and Clarks Green. It is primarily stabilized or channelized and runs along roadways and residential and commercial properties, receiving significant amounts of storm water runoff. Summit Lake Creek originates at the South Abington – Newton Twp. border and flows from the west into Leggetts Creek. Its upper stretches are more natural and undisturbed, however, lower portions also flow through developed areas. From Layton Road downstream for about 1.5 miles, through The Notch, Leggetts Creek closely follows Rtes. 6 & 11. The Notch, or Leggetts Gap, is a water gap cut by Leggetts Creek through the Lackawanna Mountain range. In addition to Leggetts Creek, the former Lackawanna Railroad (now the Canadian Pacific), Rtes. 6 & 11, and I-81 use the narrow gap to enter and leave the Lackawanna Valley.

Commercial properties along Rtes. 6 & 11 have encroached into and restrict the stream's riparian corridor. The channel is stabilized along the highway. The Chinchilla wastewater treatment plant discharges its effluent into this reach of the stream.

During summer, low-flow periods, effluent makes up most of the flow in the stream. From the discharge point downstream to The Notch, the creek is bounded by Rtes. 6 & 11 off the north bank and a well-established, native tree and understory cover along the south bank.

Sections of the stream are also rip rapped through this reach, as it runs within close proximity to the highway. The stream corridor is narrow, as it begins to flow through the Notch and under Rtes. 6 & 11 in a large concrete culvert. Just downstream of the Rtes. 6 & 11 culvert, a first order tributary enters the stream. From its source on Bell Mountain, the tributary descends a steep gradient and flows under Rte. 6 near the Viewmont Shopping Mall. Upper reaches are natural



and undisturbed by development however, from the highway to its confluence with Leggetts Creek, the tributary is channelized or stabilized around and under parking lots and roadways. From the culvert under Rtes. 6 & 11 downstream 2 miles to the confluence, Leggetts Creek and its corridor are impacted by urban development and debris, and past mining operations. Conditions are not as impacted within the first 0.5 mile portion of this stretch however. Residential development is away from the stream corridor and stable vegetative cover generally exists along a natural stream channel. (McGurl, 2001, pg. 292)

Plan for Future Monitoring of Leggetts Creek

The Lackawanna County Conservation District has already begun more intensive monitoring of Leggetts Creek. We have chosen sites above and below the treatment plant in order to gain a clear understanding of what the upgrades will have contributed to improving the health of the stream.

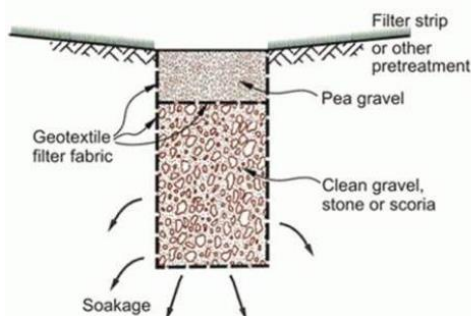
We have also started studying the contour of the stream so that we can gain a better understanding of the flow rates and a more accurate estimate of its contribution to the Lackawanna River.

Once we have accumulated enough data to make a conclusion, we will amend this report to include both the data and the conclusion.

The District continues to play a role, along with other government agencies and non-profit organizations, in educating the general public on stormwater runoff and non-point source pollution. Therefore we also recommend that residence contact their county conservation districts to see how they can implement these important practices and do their part to contribute to improved water quality.

Recommendations

In addition to continuing to monitor Leggetts Creek, the Lackawanna County Conservation District recommends that the urbanized areas adjacent to the river and its tributaries, incorporate current stormwater best management practices (BMPs) such as rain barrels, rain gardens, curb and gutter elimination in residential areas and bioretention cells in parking lots and along roadways.



Infiltration trenches can be used in place of curbs and rain barrels can be used when disconnecting downspouts. Rain Gardens can be installed at extended down spouts. Grassed swales, green parking designs and vegetated roofs can be used wherever appropriate and will help to allow infiltration of stormwater into the ground.

Infiltration Trenches



Coldwater Heritage Partnership Grant
Final Report
June 25, 2014

These BMPs allow for infiltration of stormwater and can help to eliminate pollutants from stormwater before it reaches the waterways such as streams, rivers and lakes. The EPA has a comprehensive list of BMPs at: http://www.epa.gov/oaintmnt/stormwater/best_practices.htm#best_practices and the PA DEP has a stormwater best management manual that can be found at: <http://www.elibrary.dep.state.pa.us/dsweb/View/Collection-8305>.

Many urban and suburban municipalities are now implementing stormwater BMP ordinances requiring their residence to handle any additional runoff from new development and to include these BMPs in their development plans.



Coldwater Heritage Partnership Grant
Final Report
June 25, 2014

VI. Appendix A (Chemistry Data)

Chemistry Sites 1-6

Lackawanna County, PA

Chemistry Data Provided by Lackawanna County Conservation District
Through the Coldwater Conservation Planning Grant

April 2013 – April 2014



Coldwater Heritage Partnership Grant
Final Report
June 25, 2014

West Branch Tinklepaugh Creek (Intermittent)-Site 1-Chemistry Data 41.493069, -75.591259; Elevation: 310 MASL																	
	2013								2014				Avg.	Min	Max	STDEV	
	23-Apr	28-Apr	May	1-Jul	29-Jul	Aug	Sept	Oct	4-Dec	Dec	Jan	1-Mar					1-Apr
EC (µS/cm)	27.80	49.50	25.30	29.00					14.00	19.00			36.25	28.69	14.00	49.50	11.64
TDS (mg/L)	10.00	10.00	10.00	20.00					7.00	20.00	F	F	20.00	13.86	7.00	20.00	5.84
pH	6.95	7.52	7.13	7.31					7.95	7.48	R	R	6.38	7.25	6.38	7.95	0.50
DO (%)	148.35	172.40	159.20	105.50	D	D	D	D	83.06	TI	O	O	TI	133.70	83.06	172.40	37.82
Temp. (°C)	7.47	9.61	12.42	18.08	R	R	R	R	7.00	3.39	Z	Z	3.28	8.75	3.28	18.08	5.24
Salinity (ppm)	10.00	na	10.00	10.00	Y	Y	Y	Y	TI	TI	E	E	10.00	10.00	10.00	10.00	0.00
Nitrates (mg/L)	N/A	N/A	N/A	N/A					N/A	N/A	N	N	N/A	N/A	N/A	N/A	N/A
Phosphates (mg/L)	N/A	N/A	N/A	N/A					N/A	N/A			N/A	N/A	N/A	N/A	N/A
Surrogate St. Flow (ft ²)	2.64	0.87	1.50	2.00					1.65	2.52			2.28	1.92	0.87	2.64	0.63

Hulls Creek (Perennial)-Site 2-Chemistry Data 41.492683, -75.619283; Elevation: 415 MASL																	
	2013								2014				Avg.	Min	Max	STDEV	
	23-Apr	28-Apr	May	1-Jul	29-Jul	Aug	Sept	Oct	4-Dec	Dec	Jan	1-Mar					1-Apr
EC (µS/cm)	200.00	206.00	276.00	179.50	314.50	305.00	218.50	232.00	193.00	214.00	679.00	389.90	277.50	283.45	179.50	679.00	133.21
TDS (mg/L)	135.00	135.00	190.00	120.00	140.00	50.00	109.00	115.50	97.00	200.00	490.00	270.00	130.00	167.81	50.00	490.00	110.87
pH	7.59	7.83	7.61	7.66	7.72	7.63	6.82	8.07	7.62	7.57	7.89	7.82	7.00	7.60	6.82	8.07	0.34
DO (%)	116.60	117.75	143.60	151.55	62.45	249.02	91.82	30.80	108.22	TI	85.10	TI	TI	115.69	30.80	249.02	59.11
Temp. (°C)	7.86	9.89	13.36	18.81	21.64	21.39	14.10	11.50	16.11	3.94	2.56	4.05	2.17	11.34	2.17	21.64	6.96
Salinity (ppm)	90.00	95.00	140.00	90.00	70.95	TI	TI	TI	TI	TI	310.00	160.00	135.00	136.37	70.95	310.00	76.54
Nitrates (mg/L)	N/A	N/A	N/A	N/A	N/A	N/A	N/A	N/A	N/A	N/A	N/A	N/A	N/A	N/A	N/A	N/A	N/A
Phosphates (mg/L)	N/A	N/A	N/A	N/A	N/A	N/A	N/A	N/A	N/A	N/A	N/A	N/A	N/A	N/A	N/A	N/A	N/A
Surrogate St. Flow (ft ²)	3.60	1.79	2.25	4.84	1.07	1.45	1.98	1.25	3.75	2.40	1.91	3.11	6.38	2.75	1.07	6.38	1.55

Eddy Creek (Ephemeral)-Site 3-Chemistry Data 41.445380, -75.605979; Elevation: 271 MASL																	
	2013								2014				Avg.	Min	Max	STDEV	
	23-Apr	28-Apr	May	*1-July	29-Jul	Aug	Sept	Oct	4-Dec	Dec	Jan	1-Mar					1-Apr
EC (µS/cm)				203.50										203.50	203.50	203.50	N/A
TDS (mg/L)				140.00										140.00	140.00	140.00	N/A
pH	D	D	D	6.99	D	D	D	D	D	D	D	D	D	6.99	6.99	6.99	N/A
DO (%)	R	R	R	66.50	R	R	R	R	R	R	R	R	R	66.50	66.50	66.50	N/A
Temp. (°C)	Y	Y	Y	23.42	Y	Y	Y	Y	Y	Y	Y	Y	Y	23.42	23.42	23.42	N/A
Salinity (ppm)				100.00										100.00	100.00	100.00	N/A
Nitrates (mg/L)				N/A										N/A	N/A	N/A	N/A
Phosphates (mg/L)				N/A										N/A	N/A	N/A	N/A
Surrogate St. Flow (ft ²)				N/A										N/A	N/A	N/A	N/A

Legget's Creek (Perennial)-Site 4-Chemistry Data 41.443691, -75.646085; Elevation: 221 MASL																	
	2013								2014				Avg.	Min	Max	STDEV	
	23-Apr	28-Apr	May	1-Jul	29-Jul	Aug	Sept	Oct	4-Dec	Dec	Jan	1-Mar					1-Apr
EC (µS/cm)	561.00	572.50	727.50	607.00	580.00	726.50	583.00	710.00	538.00	557.50	756.00	979.50	909.50	677.54	538.00	979.50	141.13
TDS (mg/L)	385.00	400.00	500.00	420.00	290.00	50.00	292.50	364.00	269.00	560.00	520.00	680.00	625.00	411.96	50.00	680.00	168.92
pH	9.23	9.02	7.98	7.84	8.08	7.64	8.12	8.60	7.85	7.97	8.23	8.27	7.71	8.20	7.64	9.23	0.49
DO (%)	139.70	150.75	236.75	76.05	83.82	181.64	134.45	28.95	68.93	TI	92.76	TI	TI	119.38	28.95	236.75	61.33
Temp. (°C)	9.67	14.78	12.78	20.36	22.64	22.14	15.95	11.05	7.70	5.44	2.58	0.97	5.00	11.62	0.97	22.64	7.27
Salinity (ppm)	280.00	280.00	360.00	300.00	TI	TI	TI	TI	TI	TI	330.00	430.00	435.00	345.00	280.00	435.00	66.14
Nitrates (mg/L)	N/A	N/A	N/A	N/A	N/A	N/A	N/A	N/A	2.50	N/A	N/A	N/A	N/A	2.50	2.50	2.50	N/A
Phosphates (mg/L)	N/A	N/A	N/A	N/A	N/A	N/A	N/A	N/A	1.58	N/A	N/A	N/A	N/A	1.58	1.58	1.58	N/A
Surrogate St. Flow (ft ²)	14.40	13.80	14.40	12.67	6.37	4.69	18.75	13.80	15.00	13.38	17.29	14.20	41.25	15.38	4.69	41.25	8.66



Coldwater Heritage Partnership Grant
Final Report
June 25, 2014

Un-Named Trib (Intermittent)-Site 5-Chemistry Data 41.45533, -75.621428; Elevation: 227 MASL																	
	2013										2014			Avg.	Min	Max	STDEV
	23-Apr	28-Apr	May	1-Jul	29-Jul	Aug	Sept	Oct	4-Dec	Dec	Jan	1-Mar	1-Apr				
EC (µS/cm)	179.80	187.05	235.00	141.15						115	No Testing Conducted			171.60	115.00	235.00	45.98
TDS (mg/L)	120.00	130.00	160.00	90						58				111.60	58.00	160.00	39.02
pH	7.75	8.27	7.68	7.21						7.50				7.68	7.21	8.27	0.39
DO (%)	143.85	157.10	85.85	74.90	D	D	D	D	74.28					107.20	74.28	157.10	40.05
Temp. (°C)	14.39	13.39	15.50	19.81	R	R	R	R	7.30					14.08	7.30	19.81	4.51
Salinity (ppm)	80.00	90.00	110.00	70.00	Y	Y	Y	Y	TI					87.50	70.00	110.00	17.08
Nitrates (mg/L)	N/A	N/A	N/A	N/A					N/A					N/A	N/A	N/A	N/A
Phosphates (mg/L)	N/A	N/A	N/A	N/A					N/A					N/A	N/A	N/A	N/A
Surrogate St. Flow (ft ²)	1.105	2.91	2.10	4.46	0	0	0	0	1.00					1.29	0.00	4.46	1.59

Un-Named Trib (Intermittent)-Site 6-Chemistry Data 41.452346, -75.622909; Elevation: 225 MASL																	
	2013										2014			Avg.	Min	Max	STDEV
	23-Apr	28-Apr	May	1-Jul	29-Jul	Aug	Sept	Oct	4-Dec	Dec	Jan	1-Mar	1-Apr				
EC (µS/cm)	168.10	198.40	167.45	140.60	178.00		194.00	174.00	116.00		No Testing Conducted			167.07	116.00	198.40	27.21
TDS (mg/L)	110.00	130.00	110.00	134.00	88.00		97.00	111.00	57.00					104.63	57.00	134.00	24.52
pH	8.35	8.75	7.29	6.90	7.11	D	6.20	7.40	7.46					7.43	6.20	8.75	0.80
DO (mg/L)	136.50	139.00	85.00	135.50	43.45	R	127.56	91.80	78.26					104.63	43.45	139.00	35.18
Temp. (°C)	16.78	19.22	14.72	24.17	25.06	Y	18.30	20.00	7.60					18.23	7.60	25.06	5.52
Salinity (ppm)	80.00	90.00	80.00	100.00	N/A		N/A	N/A	N/A					87.50	80.00	100.00	9.57
Nitrates (mg/L)	N/A	N/A	N/A	N/A	N/A		N/A	N/A	N/A					N/A	N/A	N/A	N/A
Phosphates (mg/L)	N/A	N/A	N/A	N/A	N/A		N/A	N/A	N/A					N/A	N/A	N/A	N/A
Surrogate St. Flow (ft ²)	6.62	3.57	0.05	1.10	0.06	0	3.42	3.50	5.51					2.65	0.00	6.62	2.47

Meters used for this study:

1. LaMotte Tracer Pocketester (Code 1749) (Salt, TDS, EC, Temp.) - Removed from service in July. Replaced by #3.
2. Extech Instruments, Dissolved Oxygen, DO600, ExStik II - Removed from service March 2014 (Technical Issues Dec 2013)
3. Hanna Waterproof Combo Tester for pH, EC, TDS, Temp.
4. Oakton Waterproof pHTestr 30-Replaced by #3 in July



VII. Appendix B (Benthic Macroinvertebrate Indexes)

Explanation of Benthic Macroinvertebrate Indexes

The following definitions were taken from:

Biological Survey of the Lackawanna River Watershed

Lackawanna County, PA

Technical Report Provided Through the

Trout Unlimited AMD Technical Assistance Program

September 2012



APPENDIX B: Description of biological metrics that were used in this project.

Taxa Richness

This is a count of the total number of taxa in a sample or sub-sample. This metric is expected to decrease with increasing anthropogenic stress to a stream ecosystem, reflecting loss of taxa and increasing dominance of a few pollution-tolerant taxa.

EPT Taxa Richness

This metric is comprised of the number of taxa belonging to the orders Ephemeroptera, Plecoptera, and Trichoptera (EPT). Common names for these orders are mayflies, stoneflies, and caddisflies, respectively. The aquatic life stages of these three insect orders are generally considered sensitive to, or intolerant of, pollution (Lenat and Penrose 1996). This metric is expected to decrease in value with increasing anthropogenic stress to a stream ecosystem, reflecting the loss of taxa from these largely pollution-sensitive orders.

Shannon Diversity Index

The Shannon Diversity Index is a community composition metric that takes into account both taxonomic richness and evenness of individuals across taxa of a sample or sub-sample. In general, this metric is expected to decrease in value with increasing anthropogenic stress to a stream ecosystem, reflecting loss of pollution-sensitive taxa and increasing dominance of a few pollution-tolerant taxa.

Hilsenhoff Biotic Index

This community composition and tolerance metric is calculated as an average of the number of individuals in a sample or sub-sample, weighted by pollution tolerance values. The Hilsenhoff Biotic Index was developed by William Hilsenhoff (Hilsenhoff 1977, 1987; Klemm et al. 1990) and generally increases with increasing ecosystem stress, reflecting dominance of pollution-tolerant organisms. Pollution tolerance values used to calculate this metric are largely based on organic nutrient pollution. Therefore, care should be given when interpreting this metric for stream ecosystems that are largely impacted by acidic pollution from abandoned mine drainage or acid deposition.

Beck's Index

This metric combines taxonomic richness and pollution tolerance. It is a weighted count of taxa with PTVs of 0, 1, or 2. It is based on the work of William H. Beck in 1955. The metric is expected to decrease in value with increasing anthropogenic stress to a stream ecosystem, reflecting the loss of pollution-sensitive taxa.

Percent (%) Intolerance Index

This community composition and tolerance metric is the percentage of individuals with PTVs of 0 to 3 in a sample or sub-sample and is expected to decrease in value with increasing anthropogenic stress to a stream ecosystem, reflecting the loss of pollution-sensitive organisms.



Coldwater Heritage Partnership Grant
Final Report
June 25, 2014

VIII. Appendix C (Fishery Survey, Leggetts Creek)

Fishery Survey of Leggetts Creek Lackawanna County, PA

Technical Report Provided Through the
Trout Unlimited AMD Technical Assistance Program

November 2013



Coldwater Heritage Partnership Grant
Final Report
June 25, 2014

Background and Methods

The Lackawanna County Conservation District (LCCD) requested technical assistance from Trout Unlimited (TU) to assess the fish community in Leggetts Creek, a tributary to the Lackawanna River. Leggetts Creek begins near Clark's Summit and flows through Leggett's Gap. The mainstem of Leggetts Creek begins at the Griffin Reservoir in South Abington Township, which serves as the drinking water supply for residents in the Leggetts Creek watershed. Leggetts Creek flows for a total of 8.0 miles and drains an area of approximately 18.5 square miles. This is the third largest tributary watershed to the Lackawanna River. Leggetts Creek enters the Lackawanna River at river mile 14.5 in the city of Scranton. The Leggetts Creek watershed is primarily developed and is listed by the Pennsylvania Department of Environmental Protection (DEP) as impaired due to urban development issues.

Abandoned mine drainage from the Marvine #6 colliery previously impaired the lower portion of Leggetts Creek. This site was reclaimed in 2001, however some coal culms may remain at or near the site.

The objective of this project was to provide the LCCD with results from a fishery survey of Leggetts Creek to supplement data provided as part of the 2011 biological assessment completed through TU's AMD Technical Assistance program. In addition, results from this project will be used to support a current project by the LCCD aimed at assessing the water quality and biology of the tributaries to the AMD impaired lower portion of the Lackawanna River.

A fishery survey was completed on 31 July 2013 near the confluence of Leggetts Creek with the Lackawanna River (41.444785N; -75.643187W) (Figure 1). The fishery survey began just upstream of the Wells Road crossing on Leggetts Creek and proceeded upstream for 101 meters and covered all available habitat. The survey site included LCCD's water quality monitoring site on Leggetts Creek. The fishery survey was completed using a Smith-Root LR24 backpack electrofisher. The survey was completed during low flow conditions to ensure the efficiency of the sampling procedure. All fish were identified to species in the field and assigned a relative abundance according to Pennsylvania Fish and Boat Commission protocol (< 2 individuals = rare; 2 – 8 individuals = present; 9 – 33 individuals = common; > 33 individuals = abundant). Trout species were measured for total length prior to release and grouped into 25 mm size classes. A total of four wetted widths were taken along the survey reach to obtain an average width that was used to calculate trout density.

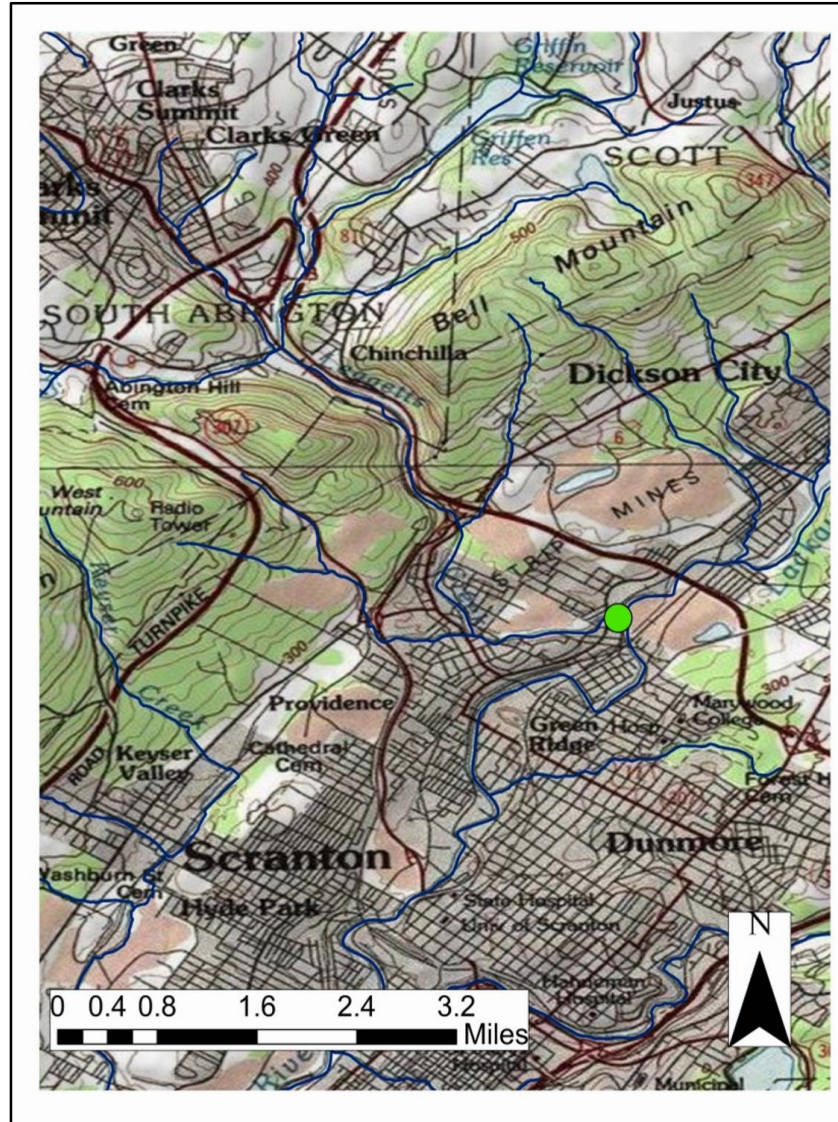


Figure 1: Map of the lower section of Leggetts Creek. The starting point of the fishery survey is indicated in green near the mouth of Leggetts Creek.

Results

A total of nine (9) brown trout were collected during the fishery survey. Brown trout ranged in total length from 84 to 316 mm with a mean of 139 mm. Mean stream width was 5.45 meters. Density of brown trout was 164 trout per hectare. Figure 2 shows the size class distribution of brown trout captured within the survey reach. Other fish species present their relative abundance are shown in Table 1. These results of the fishery survey have been sent to the Pennsylvania Fish and Boat Commission and may lead to the addition of Leggetts Creek to the “wild trout list”. This designation



Coldwater Heritage Partnership Grant
Final Report
June 25, 2014

would include an upgrade of all of the associated wetlands to Exceptional Value by the DEP and offer the stream additional protections.

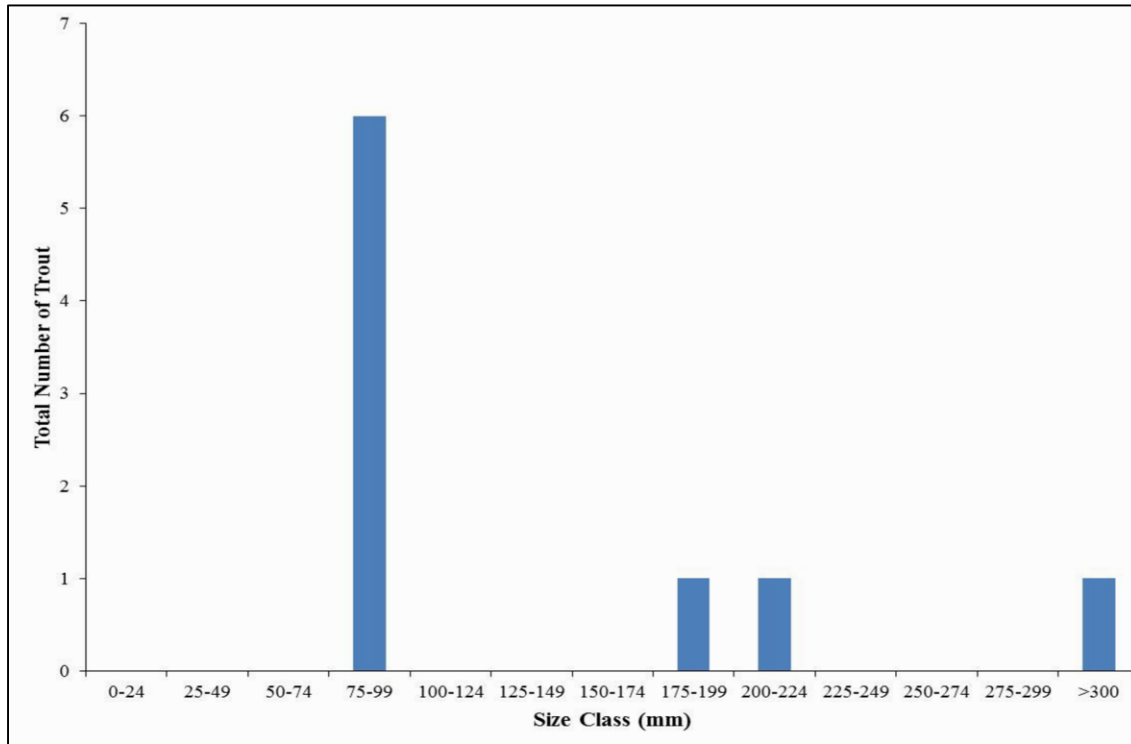


Figure 2:
Size class (mm) distribution of brown trout collected during the fishery survey of Leggetts Creek.



Coldwater Heritage Partnership Grant
Final Report
June 25, 2014

Table 1: Fish species and relative abundance collected during the fishery survey of Leggetts Creek.

Common Name	Scientific Name	Relative Abundance
Brown Trout	<i>Salmo trutta</i>	Common
Cutlips Minnow	<i>Exoglossum maxillingua</i>	Common
Longnose Dace	<i>Rhinichthys cataractae</i>	Present
Blacknose Dace	<i>Rhinichthys atratulus</i>	Present
Bluegill	<i>Lepomis macrochirus</i>	Present
Brown Bullhead	<i>Ameiurus nebulosus</i>	Rare
Largemouth Bass	<i>Micropterus salmoides</i>	Present
Pumpkinseed	<i>Lepomis gibbosus</i>	Rare
Bluntnose Minnow	<i>Pimephales notatus</i>	Rare



Coldwater Heritage Partnership Grant
Final Report
June 25, 2014

IX. Appendix D (Habitat Assessments)

Habitat Assessment of Sites 1-6

Lackawanna County, PA

Provided by Lackawanna County Conservation District Through the
Coldwater Conservation Planning Grant

August 7, 2013



Coldwater Heritage Partnership Grant
Final Report
June 25, 2014

3800-FM-BPNPSM0402 4/2012



COMMONWEALTH OF PENNSYLVANIA
DEPARTMENT OF ENVIRONMENTAL PROTECTION
BUREAU OF POINT AND NON-POINT SOURCE MANAGEMENT

**WATER QUALITY NETWORK
HABITAT ASSESSMENT**

WATERBODY NAME W.B. TINKLEPAUGH CREEK STR CODE/RMI _____
 STATION NUMBER 1 LOCATION 41.493069, -75.591259
 DATE 7 AUG 2013 TIME 10:51 A.M.
 AQUATIC ECOREGION _____ COUNTY LACKAWANNA
 INVESTIGATORS M. GIAMBRA, C. NOLAN
 FORM COMPLETED BY C. NOLAN RIFFLE/RUN PREVALENCE

Habitat Parameter	Category			
	Optimal	Suboptimal	Marginal	Poor
1. Instream Cover (Fish) SCORE <u>19</u>	Greater than 50% mix of boulder, cobble, submerged logs, undercut banks, or other stable habitat. 20 <u>19</u> 18 17 16	30-50% mix of boulder, cobble, or other stable habitat; adequate habitat. 15 14 13 12 11	10-30% mix of boulder, cobble, or other stable habitat; habitat availability less than desirable. 10 9 8 7 6	Less than 10% mix of boulder, cobble, or other stable habitat; lack of habitat is obvious. 5 4 3 2 1
2. Epifaunal Substrate SCORE <u>19</u>	Well developed riffle and run, riffle is as wide as stream and length extends two times the width of stream; abundance of cobble. 20 <u>19</u> 18 17 16	Riffle is as wide as stream but length is less than two times width; abundance of cobble; boulders and gravel common. 15 14 13 12 11	Run area may be lacking; riffle not as wide as stream and its length is less than two times the stream width; gravel or large boulders and bedrock prevalent; some cobble present. 10 9 8 7 6	Riffles or run virtually nonexistent; large boulders and bedrock prevalent; cobble lacking. 5 4 3 2 1
3. Embeddedness SCORE <u>12</u>	Gravel, cobble, and boulder particles are 0-25% surrounded by fine sediment. 20 19 18 17 16	Gravel, cobble, and boulder particles are 25-50% surrounded by fine sediment. 15 14 13 <u>12</u> 11	Gravel, cobble, and boulder particles are 50-75% surrounded by fine sediment. 10 9 8 7 6	Gravel, cobble, and boulder particles are more than 75% surrounded by fine sediment. 5 4 3 2 1
4. Velocity/Depth Regimes SCORE <u>19</u>	All four velocity/depth regimes present (slow-deep, slow-shallow, fast-deep, fast-shallow). 20 <u>19</u> 18 17 16	Only 3 of the 4 regimes present (if fast-shallow is missing, score lower than if missing other regimes). 15 14 13 12 11	Only 2 of the 4 habitat regimes present (if fast-shallow or slow-shallow are missing, score lower than if missing other regimes). 10 9 8 7 6	Dominated by 1 velocity/depth regime (usually slow-deep). 5 4 3 2 1
5. Channel Alteration SCORE <u>16</u>	No channelization or dredging present. 20 19 18 17 <u>16</u>	Some channelization present, usually in areas of bridge abutments; evidence of past channelization, i.e., dredging, (greater than past 20 yr) may be present, but recent channelization is not present. 15 14 13 12 11	New embankments present on both banks; and 40-80% of stream reach channelized and disrupted. 10 9 8 7 6	Banks shored gabion or cement; over 80% of the stream reach channelized and disrupted. 5 4 3 2 1
Total Side 1 <u>85</u>				



Coldwater Heritage Partnership Grant
Final Report
June 25, 2014

3800-FM-BPNPSM0402 4/2012

RIFFLE/RUN PREVALENCE

Habitat Parameter	Category			
	Optimal	Suboptimal	Marginal	Poor
6. Sediment Deposition SCORE <u>11</u>	Little or no enlargement of islands or point bars and less than 5% of the bottom affected by sediment deposition. 20 19 18 17 16	Some new increase in bar formation, mostly from coarse gravel; 5-30% of the bottom affected; slight deposition in pools. 15 14 13 12 11	Moderate deposition of new gravel, coarse sand on old and new bars; 30-50% of the bottom affected; sediment deposits at obstruction, constriction, and bends; moderate deposition of pools prevalent. 10 9 8 7 6	Heavy deposits of fine material, increased bar development; more than 50% of the bottom changing frequently; pools almost absent due to substantial sediment deposition. 5 4 3 2 1
7. Frequency of Riffles SCORE <u>18</u>	Occurrence of riffles relatively frequent; distance between riffles divided by the width of the stream equals 5 to 7; variety of habitat. 20 19 18 17 16	Occurrence of riffles infrequent; distance between riffles divided by the width of the stream equals 7 to 15. 15 14 13 12 11	Occasional riffle or bend; bottom contours provide some habitat; distance between riffles divided by the width of the stream is between 15 to 25. 10 9 8 7 6	Generally all flat water or shallow riffles; poor habitat; distance between riffles divided by the width of the stream is between ratio >25. 5 4 3 2 1
8. Channel Flow Status SCORE <u>8</u>	Water reaches base of both lower banks and minimal amount of channel substrate is exposed. 20 19 18 17 16	Water fills > 75% of the available channel; or <25% of channel substrate is exposed. 15 14 13 12 11	Water fills 25-75% of the available channel and/or riffle substrates are mostly exposed. 10 9 8 7 6	Very little water in channel and mostly present as standing pools. 5 4 3 2 1
9. Condition of Banks SCORE <u>13</u>	Banks stable; no evidence of erosion or bank failure. 20 19 18 17 16	Moderately stable; infrequent, small areas of erosion mostly healed over. 15 14 13 12 11	Moderately unstable; up to 60% of banks in reach have areas of erosion. 10 9 8 7 6	Unstable; many eroded areas; "raw" areas frequent along straight sections and bends; on side slopes, 60-100% of bank has erosional scars. 5 4 3 2 1
10. Bank Vegetative Protection SCORE <u>18</u>	More than 90% of the streambank surface covered by vegetation. 20 19 18 17 16	70-90% of the streambank surface covered by vegetation. 15 14 13 12 11	50-70% of the streambank surfaces covered by vegetation. 10 9 8 7 6	Less than 50% of the streambank surface covered by vegetation. 5 4 3 2 1
11. Grazing or Other Disruptive Pressure SCORE <u>20</u>	Vegetative disruption, through grazing or mowing, minimal or not evident; almost all plants allowed to grow naturally. 20 19 18 17 16	Disruption evident but not affecting full plant growth potential to any great extent; more than one-half of the potential plant stubble height remaining. 15 14 13 12 11	Disruption obvious; patches of bare soil or closely cropped vegetation common; less than one-half of the potential plant stubble height remaining. 10 9 8 7 6	Disruption of vegetation is very high; vegetation has been removed to 2 inches or less in average stubble height. 5 4 3 2 1
12. Riparian Vegetative Zone Width SCORE <u>19</u>	Width of riparian zone >18 meters; human activities (i.e., parking lots, roadbeds, clear-cuts, lawns, or crops) have not impacted zone. 20 19 18 17 16	Width of riparian zone 12-18 meters; human activities have impacted zone only minimally. 15 14 13 12 11	Width of riparian zone 6-12 meters; human activities have impacted zone a great deal. 10 9 8 7 6	Width of riparian zone <6 meters; little or no riparian vegetation due to human activities. 5 4 3 2 1
Total Side 2 <u>107</u>				
Total Score <u>192</u>				



Coldwater Heritage Partnership Grant
Final Report
June 25, 2014

3800-FM-BPNPSM0402 4/2012
pennsylvania
DEPARTMENT OF ENVIRONMENTAL
PROTECTION

COMMONWEALTH OF PENNSYLVANIA
DEPARTMENT OF ENVIRONMENTAL PROTECTION
BUREAU OF POINT AND NON-POINT SOURCE MANAGEMENT

**WATER QUALITY NETWORK
HABITAT ASSESSMENT**

WATERBODY NAME HULL CREEK STR CODE/RMI _____
STATION NUMBER 2 LOCATION 41.492683, -75.619283
DATE 7 AUG 2013 TIME 11:10
AQUATIC ECOREGION _____ COUNTY LACKAWANNA
INVESTIGATORS M. GIAMBRA, C. NOLAN
FORM COMPLETED BY C. NOLAN RIFFLE/RUN PREVALENCE

Habitat Parameter	Category			
	Optimal	Suboptimal	Marginal	Poor
1. Instream Cover (Fish) SCORE <u>13</u>	Greater than 50% mix of boulder, cobble, submerged logs, undercut banks, or other stable habitat. 20 19 18 17 16	30-50% mix of boulder, cobble, or other stable habitat; adequate habitat. 15 14 <u>13</u> 12 11	10-30% mix of boulder, cobble, or other stable habitat; habitat availability less than desirable. 10 9 8 7 6	Less than 10% mix of boulder, cobble, or other stable habitat; lack of habitat is obvious. 5 4 3 2 1
2. Epifaunal Substrate SCORE <u>9</u>	Well developed riffle and run, riffle is as wide as stream and length extends two times the width of stream; abundance of cobble. 20 19 18 17 16	Riffle is as wide as stream but length is less than two times width; abundance of cobble; boulders and gravel common. 15 14 13 12 11	Run area may be lacking; riffle not as wide as stream and its length is less than two times the stream width; gravel or large boulders and bedrock prevalent; some cobble present. 10 <u>9</u> 8 7 6	Riffles or run virtually nonexistent; large boulders and bedrock prevalent; cobble lacking. 5 4 3 2 1
3. Embeddedness SCORE <u>18</u>	Gravel, cobble, and boulder particles are 0-25% surrounded by fine sediment. 20 19 <u>18</u> 17 16	Gravel, cobble, and boulder particles are 25-50% surrounded by fine sediment. 15 14 13 12 11	Gravel, cobble, and boulder particles are 50-75% surrounded by fine sediment. 10 9 8 7 6	Gravel, cobble, and boulder particles are more than 75% surrounded by fine sediment. 5 4 3 2 1
4. Velocity/Depth Regimes SCORE <u>5</u>	All four velocity/depth regimes present (slow-deep, slow-shallow, fast-deep, fast-shallow). 20 19 18 17 16	Only 3 of the 4 regimes present (if fast-shallow is missing, score lower than if missing other regimes). 15 14 13 12 11	Only 2 of the 4 habitat regimes present (if fast-shallow or slow-shallow are missing, score lower than if missing other regimes). 10 9 8 7 6	Dominated by 1 velocity/depth regime (usually slow-deep). <u>5</u> 4 3 2 1
5. Channel Alteration SCORE <u>13</u>	No channelization or dredging present. 20 19 18 17 16	Some channelization present, usually in areas of bridge abutments; evidence of past channelization, i.e., dredging, (greater than past 20 yr) may be present, but recent channelization is not present. 15 14 <u>13</u> 12 11	New embankments present on both banks; and 40-80% of stream reach channelized and disrupted. 10 9 8 7 6	Banks shored gabion or cement; over 80% of the stream reach channelized and disrupted. 5 4 3 2 1
Total Side 1 <u>58</u>				



Coldwater Heritage Partnership Grant
Final Report
June 25, 2014

3800-FM-BPNPMS0402 4/2012

RIFFLE/RUN PREVALENCE

Habitat Parameter	Category			
	Optimal	Suboptimal	Marginal	Poor
6. Sediment Deposition	Little or no enlargement of islands or point bars and less than 5% of the bottom affected by sediment deposition.	Some new increase in bar formation, mostly from coarse gravel; 5-30% of the bottom affected; slight deposition in pools.	Moderate deposition of new gravel, coarse sand on old and new bars; 30-50% of the bottom affected; sediment deposits at obstruction, constriction, and bends; moderate deposition of pools prevalent.	Heavy deposits of fine material, increased bar development; more than 50% of the bottom changing frequently; pools almost absent due to substantial sediment deposition.
SCORE <u>19</u>	20 <u>19</u> 18 17 16	15 14 13 12 11	10 9 8 7 6	5 4 3 2 1
7. Frequency of Riffles	Occurrence of riffles relatively frequent; distance between riffles divided by the width of the stream equals 5 to 7; variety of habitat.	Occurrence of riffles infrequent; distance between riffles divided by the width of the stream equals 7 to 15.	Occasional riffle or bend; bottom contours provide some habitat; distance between riffles divided by the width of the stream is between 15 to 25.	Generally all flat water or shallow riffles; poor habitat; distance between riffles divided by the width of the stream is between ratio >25.
SCORE <u>18</u>	20 19 <u>18</u> 17 16	15 14 13 12 11	10 9 8 7 6	5 4 3 2 1
8. Channel Flow Status	Water reaches base of both lower banks and minimal amount of channel substrate is exposed.	Water fills > 75% of the available channel; or <25% of channel substrate is exposed.	Water fills 25-75% of the available channel and/or riffle substrates are mostly exposed.	Very little water in channel and mostly present as standing pools.
SCORE <u>8</u>	20 19 18 17 16	15 14 13 12 11	10 9 <u>8</u> 7 6	5 4 3 2 1
9. Condition of Banks	Banks stable; no evidence of erosion or bank failure.	Moderately stable; infrequent, small areas of erosion mostly healed over.	Moderately unstable; up to 60% of banks in reach have areas of erosion.	Unstable; many eroded areas; "raw" areas frequent along straight sections and bends; on side slopes, 60-100% of bank has erosional scars.
SCORE <u>13</u>	20 19 18 17 16	15 14 <u>13</u> 12 11	10 9 8 7 6	5 4 3 2 1
10. Bank Vegetative Protection	More than 90% of the streambank surface covered by vegetation.	70-90% of the streambank surface covered by vegetation.	50-70% of the streambank surfaces covered by vegetation.	Less than 50% of the streambank surface covered by vegetation.
SCORE <u>13</u>	20 19 18 17 16	15 14 <u>13</u> 12 11	10 9 8 7 6	5 4 3 2 1
11. Grazing or Other Disruptive Pressure	Vegetative disruption, through grazing or mowing, minimal or not evident; almost all plants allowed to grow naturally.	Disruption evident but not affecting full plant growth potential to any great extent; more than one-half of the potential plant stubble height remaining.	Disruption obvious; patches of bare soil or closely cropped vegetation common; less than one-half of the potential plant stubble height remaining.	Disruption of vegetation is very high; vegetation has been removed to 2 inches or less in average stubble height.
SCORE <u>20</u>	<u>20</u> 19 18 17 16	15 14 13 12 11	10 9 8 7 6	5 4 3 2 1
12. Riparian Vegetative Zone Width	Width of riparian zone >18 meters; human activities (i.e., parking lots, roadbeds, clear-cuts, lawns, or crops) have not impacted zone.	Width of riparian zone 12-18 meters; human activities have impacted zone only minimally.	Width of riparian zone 6-12 meters; human activities have impacted zone a great deal.	Width of riparian zone <6 meters; little or no riparian vegetation due to human activities.
SCORE <u>10</u>	20 19 18 17 16	15 14 13 12 11	<u>10</u> 9 8 7 6	5 4 3 2 1
Total Side 2 <u>101</u>				
Total Score <u>159</u>				



Coldwater Heritage Partnership Grant
Final Report
June 25, 2014

3800-FM-BPNPSM0402 4/2012
pennsylvania
DEPARTMENT OF ENVIRONMENTAL
PROTECTION

COMMONWEALTH OF PENNSYLVANIA
DEPARTMENT OF ENVIRONMENTAL PROTECTION
BUREAU OF POINT AND NON-POINT SOURCE MANAGEMENT

**WATER QUALITY NETWORK
HABITAT ASSESSMENT**

WATERBODY NAME EDDY CREEK STR CODE/RMI _____
STATION NUMBER 3 LOCATION 41.445380, -75.605909
DATE 7 Aug 2013 TIME 11:25
AQUATIC ECOREGION _____ COUNTY LACKAWANNA
INVESTIGATORS M. GIAMBRA, C. NOLAN
FORM COMPLETED BY C. NOLAN RIFFLER/RUN PREVALENCE

Habitat Parameter	Category			
	Optimal	Suboptimal	Marginal	Poor
1. Instream Cover (Fish) SCORE <u>1</u>	Greater than 50% mix of boulder, cobble, submerged logs, undercut banks, or other stable habitat. 20 19 18 17 16	30-50% mix of boulder, cobble, or other stable habitat; adequate habitat. 15 14 13 12 11	10-30% mix of boulder, cobble, or other stable habitat; habitat availability less than desirable. 10 9 8 7 6	Less than 10% mix of boulder, cobble, or other stable habitat; lack of habitat is obvious. 5 4 3 2 1
2. Epifaunal Substrate SCORE <u>0</u>	Well developed riffle and run, riffle is as wide as stream and length extends two times the width of stream; abundance of cobble. 20 19 18 17 16	Riffle is as wide as stream but length is less than two times width; abundance of cobble; boulders and gravel common. 15 14 13 12 11	Run area may be lacking; riffle not as wide as stream and its length is less than two times the stream width; gravel or large boulders and bedrock prevalent; some cobble present. 10 9 8 7 6	Riffles or run virtually nonexistent; large boulders and bedrock prevalent; cobble lacking. 5 4 3 2 1
3. Embeddedness SCORE <u>1</u>	Gravel, cobble, and boulder particles are 0-25% surrounded by fine sediment. 20 19 18 17 16	Gravel, cobble, and boulder particles are 25-50% surrounded by fine sediment. 15 14 13 12 11	Gravel, cobble, and boulder particles are 50-75% surrounded by fine sediment. 10 9 8 7 6	Gravel, cobble, and boulder particles are more than 75% surrounded by fine sediment. 5 4 3 2 1
4. Velocity/Depth Regimes SCORE <u>0</u>	All four velocity/depth regimes present (slow-deep, slow-shallow, fast-deep, fast-shallow). 20 19 18 17 16	Only 3 of the 4 regimes present (if fast-shallow is missing, score lower than if missing other regimes). 15 14 13 12 11	Only 2 of the 4 habitat regimes present (if fast-shallow or slow-shallow are missing, score lower than if missing other regimes). 10 9 8 7 6	Dominated by 1 velocity/depth regime (usually slow-deep). 5 4 3 2 1
5. Channel Alteration SCORE <u>19</u>	No channelization or dredging present. 20 19 18 17 16	Some channelization present, usually in areas of bridge abutments; evidence of past channelization, i.e., dredging, (greater than past 20 yr) may be present, but recent channelization is not present. 15 14 13 12 11	New embankments present on both banks; and 40-80% of stream reach channelized and disrupted. 10 9 8 7 6	Banks shored gabion or cement; over 80% of the stream reach channelized and disrupted. 5 4 3 2 1
Total Side 1 <u>21</u>				



Coldwater Heritage Partnership Grant
 Final Report
 June 25, 2014

3800-FM-BPNPMS0402 4/2012

RIFFLE/RUN PREVALENCE

Habitat Parameter	Category			
	Optimal	Suboptimal	Marginal	Poor
6. Sediment Deposition	Little or no enlargement of islands or point bars and less than 5% of the bottom affected by sediment deposition.	Some new increase in bar formation, mostly from coarse gravel; 5-30% of the bottom affected; slight deposition in pools.	Moderate deposition of new gravel, coarse sand on old and new bars; 30-50% of the bottom affected; sediment deposits at obstruction, constriction, and bends; moderate deposition of pools prevalent.	Heavy deposits of fine material, increased bar development; more than 50% of the bottom changing frequently; pools almost absent due to substantial sediment deposition.
SCORE <u>1</u>	20 19 18 17 16	15 14 13 12 11	10 9 8 7 6	5 4 3 2 1
7. Frequency of Riffles	Occurrence of riffles relatively frequent; distance between riffles divided by the width of the stream equals 5 to 7; variety of habitat.	Occurrence of riffles infrequent; distance between riffles divided by the width of the stream equals 7 to 15.	Occasional riffle or bend; bottom contours provide some habitat; distance between riffles divided by the width of the stream is between 15 to 25.	Generally all flat water or shallow riffles; poor habitat; distance between riffles divided by the width of the stream is between ratio >25.
SCORE <u>2</u>	20 19 18 17 16	15 14 13 12 11	10 9 8 7 6	5 4 3 2 1
8. Channel Flow Status	Water reaches base of both lower banks and minimal amount of channel substrate is exposed.	Water fills > 75% of the available channel; or <25% of channel substrate is exposed.	Water fills 25-75% of the available channel and/or riffle substrates are mostly exposed.	Very little water in channel and mostly present as standing pools.
SCORE <u>2</u>	20 19 18 17 16	15 14 13 12 11	10 9 8 7 6	5 4 3 2 1
9. Condition of Banks	Banks stable; no evidence of erosion or bank failure.	Moderately stable; infrequent, small areas of erosion mostly healed over.	Moderately unstable; up to 60% of banks in reach have areas of erosion.	Unstable; many eroded areas; "raw" areas frequent along straight sections and bends; on side slopes, 60-100% of bank has erosional scars.
SCORE <u>18</u>	20 19 18 17 16	15 14 13 12 11	10 9 8 7 6	5 4 3 2 1
10. Bank Vegetative Protection	More than 90% of the streambank surface covered by vegetation.	70-90% of the streambank surface covered by vegetation.	50-70% of the streambank surfaces covered by vegetation.	Less than 50% of the streambank surface covered by vegetation.
SCORE <u>18</u>	20 19 18 17 16	15 14 13 12 11	10 9 8 7 6	5 4 3 2 1
11. Grazing or Other Disruptive Pressure	Vegetative disruption, through grazing or mowing, minimal or not evident; almost all plants allowed to grow naturally.	Disruption evident but not affecting full plant growth potential to any great extent; more than one-half of the potential plant stubble height remaining.	Disruption obvious; patches of bare soil or closely cropped vegetation common; less than one-half of the potential plant stubble height remaining.	Disruption of vegetation is very high; vegetation has been removed to 2 inches or less in average stubble height.
SCORE <u>19</u>	20 19 18 17 16	15 14 13 12 11	10 9 8 7 6	5 4 3 2 1
12. Riparian Vegetative Zone Width	Width of riparian zone >18 meters; human activities (i.e., parking lots, roadbeds, clear-cuts, lawns, or crops) have not impacted zone.	Width of riparian zone 12-18 meters; human activities have impacted zone only minimally.	Width of riparian zone 6-12 meters; human activities have impacted zone a great deal.	Width of riparian zone <6 meters; little or no riparian vegetation due to human activities.
SCORE <u>19</u>	20 19 18 17 16	15 14 13 12 11	10 9 8 7 6	5 4 3 2 1
Total Side 2 <u>79</u>				
Total Score <u>100</u>				



Coldwater Heritage Partnership Grant
Final Report
June 25, 2014

3800-FM-BPNPMSM0402 4/2012

RIFFLE/RUN PREVALENCE

Habitat Parameter	Category			
	Optimal	Suboptimal	Marginal	Poor
6. Sediment Deposition SCORE <u>19</u>	Little or no enlargement of islands or point bars and less than 5% of the bottom affected by sediment deposition. 20 19 18 17 16	Some new increase in bar formation, mostly from coarse gravel; 5-30% of the bottom affected; slight deposition in pools. 15 14 13 12 11	Moderate deposition of new gravel, coarse sand on old and new bars; 30-50% of the bottom affected; sediment deposits at obstruction, constriction, and bends; moderate deposition of pools prevalent. 10 9 8 7 6	Heavy deposits of fine material, increased bar development; more than 50% of the bottom changing frequently; pools almost absent due to substantial sediment deposition. 5 4 3 2 1
7. Frequency of Riffles SCORE <u>17</u>	Occurrence of riffles relatively frequent; distance between riffles divided by the width of the stream equals 5 to 7; variety of habitat. 20 19 18 17 16	Occurrence of riffles infrequent; distance between riffles divided by the width of the stream equals 7 to 15. 15 14 13 12 11	Occasional riffle or bend; bottom contours provide some habitat; distance between riffles divided by the width of the stream is between 15 to 25. 10 9 8 7 6	Generally all flat water or shallow riffles; poor habitat; distance between riffles divided by the width of the stream is between ratio >25. 5 4 3 2 1
8. Channel Flow Status SCORE <u>10</u>	Water reaches base of both lower banks and minimal amount of channel substrate is exposed. 20 19 18 17 16	Water fills > 75% of the available channel; or <25% of channel substrate is exposed. 15 14 13 12 11	Water fills 25-75% of the available channel and/or riffle substrates are mostly exposed. 10 9 8 7 6	Very little water in channel and mostly present as standing pools. 5 4 3 2 1
9. Condition of Banks SCORE <u>19</u>	Banks stable; no evidence of erosion or bank failure. 20 19 18 17 16	Moderately stable; infrequent, small areas of erosion mostly healed over. 15 14 13 12 11	Moderately unstable; up to 60% of banks in reach have areas of erosion. 10 9 8 7 6	Unstable; many eroded areas; "raw" areas frequent along straight sections and bends; on side slopes, 60-100% of bank has erosional scars. 5 4 3 2 1
10. Bank Vegetative Protection SCORE <u>14</u>	More than 90% of the streambank surface covered by vegetation. 20 19 18 17 16	70-90% of the streambank surface covered by vegetation. 15 14 13 12 11	50-70% of the streambank surfaces covered by vegetation. 10 9 8 7 6	Less than 50% of the streambank surface covered by vegetation. 5 4 3 2 1
11. Grazing or Other Disruptive Pressure SCORE <u>17</u>	Vegetative disruption, through grazing or mowing, minimal or not evident; almost all plants allowed to grow naturally. 20 19 18 17 16	Disruption evident but not affecting full plant growth potential to any great extent; more than one-half of the potential plant stubble height remaining. 15 14 13 12 11	Disruption obvious; patches of bare soil or closely cropped vegetation common; less than one-half of the potential plant stubble height remaining. 10 9 8 7 6	Disruption of vegetation is very high; vegetation has been removed to 2 inches or less in average stubble height. 5 4 3 2 1
12. Riparian Vegetative Zone Width SCORE <u>10</u>	Width of riparian zone >18 meters; human activities (i.e., parking lots, roadbeds, clear-cuts, lawns, or crops) have not impacted zone. 20 19 18 17 16	Width of riparian zone 12-18 meters; human activities have impacted zone only minimally. 15 14 13 12 11	Width of riparian zone 6-12 meters; human activities have impacted zone a great deal. 10 9 8 7 6	Width of riparian zone <6 meters; little or no riparian vegetation due to human activities. 5 4 3 2 1
Total Side 2 <u>104</u>				
Total Score <u>193</u>				



Coldwater Heritage Partnership Grant
Final Report
June 25, 2014

3800-FM-BPNPMD402 4/2012
pennsylvania
DEPARTMENT OF ENVIRONMENTAL
PROTECTION

COMMONWEALTH OF PENNSYLVANIA
DEPARTMENT OF ENVIRONMENTAL PROTECTION
BUREAU OF POINT AND NON-POINT SOURCE MANAGEMENT

WATER QUALITY NETWORK HABITAT ASSESSMENT

WATERBODY NAME UNNAMED TRIB STR CODE/RMI _____
 STATION NUMBER #5 LOCATION 41.459533, -75.621428
 DATE 7 Aug. 2013 TIME 12:20
 AQUATIC ECOREGION _____ COUNTY _____
 INVESTIGATORS _____
 FORM COMPLETED BY _____ RIFFLE/RUN PREVALENCE

Habitat Parameter	Category			
	Optimal	Suboptimal	Marginal	Poor
1. Instream Cover (Fish) SCORE <u>8</u>	Greater than 50% mix of boulder, cobble, submerged logs, undercut banks, or other stable habitat. 20 19 18 17 16	30-50% mix of boulder, cobble, or other stable habitat; adequate habitat. 15 14 13 12 11	10-30% mix of boulder, cobble, or other stable habitat; habitat availability less than desirable. 10 9 <u>8</u> 7 6	Less than 10% mix of boulder, cobble, or other stable habitat; lack of habitat is obvious. 5 4 3 2 1
2. Epifaunal Substrate SCORE <u>6</u>	Well developed riffle and run, riffle is as wide as stream and length extends two times the width of stream; abundance of cobble. 20 19 18 17 16	Riffle is as wide as stream but length is less than two times width; abundance of cobble; boulders and gravel common. 15 14 13 12 11	Run area may be lacking; riffle not as wide as stream and its length is less than two times the stream width; gravel or large boulders and bedrock prevalent; some cobble present. 10 9 8 7 <u>6</u>	Riffles or run virtually nonexistent; large boulders and bedrock prevalent; cobble lacking. 5 4 3 2 1
3. Embeddedness SCORE <u>8</u>	Gravel, cobble, and boulder particles are 0-25% surrounded by fine sediment. 20 19 18 17 16	Gravel, cobble, and boulder particles are 25-50% surrounded by fine sediment. 15 14 13 12 11	Gravel, cobble, and boulder particles are 50-75% surrounded by fine sediment. 10 9 <u>8</u> 7 6	Gravel, cobble, and boulder particles are more than 75% surrounded by fine sediment. 5 4 3 2 1
4. Velocity/Depth Regimes SCORE <u>2</u>	All four velocity/depth regimes present (slow-deep, slow-shallow, fast-deep, fast-shallow). 20 19 18 17 16	Only 3 of the 4 regimes present (if fast-shallow is missing, score lower than if missing other regimes). 15 14 13 12 11	Only 2 of the 4 habitat regimes present (if fast-shallow or slow-shallow are missing, score lower than if missing other regimes). 10 9 8 7 6	Dominated by 1 velocity/depth regime (usually slow-deep). 5 4 3 <u>2</u> 1
5. Channel Alteration SCORE <u>11</u>	No channelization or dredging present. 20 19 18 17 16	Some channelization present, usually in areas of bridge abutments; evidence of past channelization, i.e., dredging, (greater than past 20 yr) may be present, but recent channelization is not present. 15 14 13 12 <u>11</u>	New embankments present on both banks; and 40-80% of stream reach channelized and disrupted. 10 9 8 7 6	Banks shored gabion or cement; over 80% of the stream reach channelized and disrupted. 5 4 3 2 1
Total Side 1 <u>35</u>				



Coldwater Heritage Partnership Grant
 Final Report
 June 25, 2014

3800-FM-BPNPMD402 4/2012

RIFFLE/RUN PREVALENCE

Habitat Parameter	Category			
	Optimal	Suboptimal	Marginal	Poor
6. Sediment Deposition SCORE <u>6</u>	Little or no enlargement of islands or point bars and less than 5% of the bottom affected by sediment deposition. 20 19 18 17 16	Some new increase in bar formation, mostly from coarse gravel; 5-30% of the bottom affected; slight deposition in pools. 15 14 13 12 11	Moderate deposition of new gravel, coarse sand on old and new bars; 30-50% of the bottom affected; sediment deposits at obstruction, constriction, and bends; moderate deposition of pools prevalent. 10 9 8 7 6	Heavy deposits of fine material, increased bar development; more than 50% of the bottom changing frequently; pools almost absent due to substantial sediment deposition. 5 4 3 2 1
7. Frequency of Riffles SCORE <u>4</u>	Occurrence of riffles relatively frequent; distance between riffles divided by the width of the stream equals 5 to 7; variety of habitat. 20 19 18 17 16	Occurrence of riffles infrequent; distance between riffles divided by the width of the stream equals 7 to 15. 15 14 13 12 11	Occasional riffle or bend; bottom contours provide some habitat; distance between riffles divided by the width of the stream is between 15 to 25. 10 9 8 7 6	Generally all flat water or shallow riffles; poor habitat; distance between riffles divided by the width of the stream is between ratio >25. 5 4 3 2 1
8. Channel Flow Status SCORE <u>15</u>	Water reaches base of both lower banks and minimal amount of channel substrate is exposed. 20 19 18 17 16	Water fills > 75% of the available channel; or <25% of channel substrate is exposed. 15 14 13 12 11	Water fills 25-75% of the available channel and/or riffle substrates are mostly exposed. 10 9 8 7 6	Very little water in channel and mostly present as standing pools. 5 4 3 2 1
9. Condition of Banks SCORE <u>18</u>	Banks stable; no evidence of erosion or bank failure. 20 19 18 17 16	Moderately stable; infrequent, small areas of erosion mostly healed over. 15 14 13 12 11	Moderately unstable; up to 60% of banks in reach have areas of erosion. 10 9 8 7 6	Unstable; many eroded areas; "raw" areas frequent along straight sections and bends; on side slopes, 60-100% of bank has erosional scars. 5 4 3 2 1
10. Bank Vegetative Protection SCORE <u>19</u>	More than 90% of the streambank surface covered by vegetation. 20 19 18 17 16	70-90% of the streambank surface covered by vegetation. 15 14 13 12 11	50-70% of the streambank surfaces covered by vegetation. 10 9 8 7 6	Less than 50% of the streambank surface covered by vegetation. 5 4 3 2 1
11. Grazing or Other Disruptive Pressure SCORE <u>13</u>	Vegetative disruption, through grazing or mowing, minimal or not evident; almost all plants allowed to grow naturally. 20 19 18 17 16	Disruption evident but not affecting full plant growth potential to any great extent; more than one-half of the potential plant stubble height remaining. 15 14 13 12 11	Disruption obvious; patches of bare soil or closely cropped vegetation common; less than one-half of the potential plant stubble height remaining. 10 9 8 7 6	Disruption of vegetation is very high; vegetation has been removed to 2 inches or less in average stubble height. 5 4 3 2 1
12. Riparian Vegetative Zone Width SCORE <u>8</u>	Width of riparian zone >18 meters; human activities (i.e., parking lots, roadbeds, clear-cuts, lawns, or crops) have not impacted zone. 20 19 18 17 16	Width of riparian zone 12-18 meters; human activities have impacted zone only minimally. 15 14 13 12 11	Width of riparian zone 6-12 meters; human activities have impacted zone a great deal. 10 9 8 7 6	Width of riparian zone <6 meters; little or no riparian vegetation due to human activities. 5 4 3 2 1
Total Side 2 <u>83</u>				
Total Score <u>118</u>				



Coldwater Heritage Partnership Grant
Final Report
June 25, 2014

3800-FM-BPNPSM0402 4/2012

COMMONWEALTH OF PENNSYLVANIA
 DEPARTMENT OF ENVIRONMENTAL PROTECTION
 BUREAU OF POINT AND NON-POINT SOURCE MANAGEMENT

WATER QUALITY NETWORK HABITAT ASSESSMENT

WATERBODY NAME UNNAMED TRIB #6 STR CODE/RMI _____
 STATION NUMBER 6 LOCATION 41.452546, -75.622909
 DATE 7 AUG. 2013 TIME 11:45
 AQUATIC ECOREGION _____ COUNTY LACK
 INVESTIGATORS M. GIAMBRA, C. NOLAN
 FORM COMPLETED BY _____ RIFFLE/RUN PREVALENCE

Habitat Parameter	Category			
	Optimal	Suboptimal	Marginal	Poor
1. Instream Cover (Fish) SCORE <u>7</u>	Greater than 50% mix of boulder, cobble, submerged logs, undercut banks, or other stable habitat. 20 19 18 17 16	30-50% mix of boulder, cobble, or other stable habitat; adequate habitat. 15 14 13 12 11	10-30% mix of boulder, cobble, or other stable habitat; habitat availability less than desirable. 10 9 8 <u>7</u> 6	Less than 10% mix of boulder, cobble, or other stable habitat; lack of habitat is obvious. 5 4 3 2 1
2. Epifaunal Substrate SCORE <u>11</u>	Well developed riffle and run, riffle is as wide as stream and length extends two times the width of stream; abundance of cobble. 20 19 18 17 16	Riffle is as wide as stream but length is less than two times width; abundance of cobble; boulders and gravel common. 15 14 13 12 <u>11</u>	Run area may be lacking; riffle not as wide as stream and its length is less than two times the stream width; gravel or large boulders and bedrock prevalent; some cobble present. 10 9 8 7 6	Riffles or run virtually nonexistent; large boulders and bedrock prevalent; cobble lacking. 5 4 3 2 1
3. Embeddedness SCORE <u>5</u>	Gravel, cobble, and boulder particles are 0-25% surrounded by fine sediment. 20 19 18 17 16	Gravel, cobble, and boulder particles are 25-50% surrounded by fine sediment. 15 14 13 12 11	Gravel, cobble, and boulder particles are 50-75% surrounded by fine sediment. 10 9 8 7 6	Gravel, cobble, and boulder particles are more than 75% surrounded by fine sediment. <u>5</u> 4 3 2 1
4. Velocity/Depth Regimes SCORE <u>3</u>	All four velocity/depth regimes present (slow-deep, slow-shallow, fast-deep, fast-shallow). 20 19 18 17 16	Only 3 of the 4 regimes present (if fast-shallow is missing, score lower than if missing other regimes). 15 14 13 12 11	Only 2 of the 4 habitat regimes present (if fast-shallow or slow-shallow are missing, score lower than if missing other regimes). 10 9 8 7 6	Dominated by 1 velocity/depth regime (usually slow-deep). 5 4 <u>3</u> 2 1
5. Channel Alteration SCORE <u>17</u>	No channelization or dredging present. 20 19 18 <u>17</u> 16	Some channelization present, usually in areas of bridge abutments; evidence of past channelization, i.e., dredging, (greater than past 20 yr) may be present, but recent channelization is not present. 15 14 13 12 11	New embankments present on both banks; and 40-80% of stream reach channelized and disrupted. 10 9 8 7 6	Banks shored gabion or cement; over 80% of the stream reach channelized and disrupted. 5 4 3 2 1
Total Side 1 <u>43</u>				



Coldwater Heritage Partnership Grant
Final Report
June 25, 2014

3800-FM-BPNP5M0402 4/2012

RIFFLE/RUN PREVALENCE

Habitat Parameter	Category			
	Optimal	Suboptimal	Marginal	Poor
6. Sediment Deposition SCORE <u>11</u>	Little or no enlargement of islands or point bars and less than 5% of the bottom affected by sediment deposition. 20 19 18 17 16	Some new increase in bar formation, mostly from coarse gravel; 5-30% of the bottom affected; slight deposition in pools. 15 14 13 12 11	Moderate deposition of new gravel, coarse sand on old and new bars; 30-50% of the bottom affected; sediment deposits at obstruction, constriction, and bends; moderate deposition of pools prevalent. 10 9 8 7 6	Heavy deposits of fine material, increased bar development; more than 50% of the bottom changing frequently; pools almost absent due to substantial sediment deposition. 5 4 3 2 1
7. Frequency of Riffles SCORE <u>8</u>	Occurrence of riffles relatively frequent; distance between riffles divided by the width of the stream equals 5 to 7; variety of habitat. 20 19 18 17 16	Occurrence of riffles infrequent; distance between riffles divided by the width of the stream equals 7 to 15. 15 14 13 12 11	Occasional riffle or bend; bottom contours provide some habitat; distance between riffles divided by the width of the stream is between 15 to 25. 10 9 8 7 6	Generally all flat water or shallow riffles; poor habitat; distance between riffles divided by the width of the stream is between ratio >25. 5 4 3 2 1
8. Channel Flow Status SCORE <u>8</u>	Water reaches base of both lower banks and minimal amount of channel substrate is exposed. 20 19 18 17 16	Water fills > 75% of the available channel; or <25% of channel substrate is exposed. 15 14 13 12 11	Water fills 25-75% of the available channel and/or riffle substrates are mostly exposed. 10 9 8 7 6	Very little water in channel and mostly present as standing pools. 5 4 3 2 1
9. Condition of Banks SCORE <u>14</u>	Banks stable; no evidence of erosion or bank failure. 20 19 18 17 16	Moderately stable; infrequent, small areas of erosion mostly healed over. 15 14 13 12 11	Moderately unstable; up to 60% of banks in reach have areas of erosion. 10 9 8 7 6	Unstable; many eroded areas; "raw" areas frequent along straight sections and bends; on side slopes, 60-100% of bank has erosional scars. 5 4 3 2 1
10. Bank Vegetative Protection SCORE <u>19</u>	More than 90% of the streambank surface covered by vegetation. 20 19 18 17 16	70-90% of the streambank surface covered by vegetation. 15 14 13 12 11	50-70% of the streambank surfaces covered by vegetation. 10 9 8 7 6	Less than 50% of the streambank surface covered by vegetation. 5 4 3 2 1
11. Grazing or Other Disruptive Pressure SCORE <u>19</u>	Vegetative disruption, through grazing or mowing, minimal or not evident; almost all plants allowed to grow naturally. 20 19 18 17 16	Disruption evident but not affecting full plant growth potential to any great extent; more than one-half of the potential plant stubble height remaining. 15 14 13 12 11	Disruption obvious; patches of bare soil or closely cropped vegetation common; less than one-half of the potential plant stubble height remaining. 10 9 8 7 6	Disruption of vegetation is very high; vegetation has been removed to 2 inches or less in average stubble height. 5 4 3 2 1
12. Riparian Vegetative Zone Width SCORE <u>7</u>	Width of riparian zone >18 meters; human activities (i.e., parking lots, roadbeds, clear-cuts, lawns, or crops) have not impacted zone. 20 19 18 17 16	Width of riparian zone 12-18 meters; human activities have impacted zone only minimally. 15 14 13 12 11	Width of riparian zone 6-12 meters; human activities have impacted zone a great deal. 10 9 8 7 6	Width of riparian zone <6 meters; little or no riparian vegetation due to human activities. 5 4 3 2 1
Total Side 2 <u>86</u>				
Total Score <u>129</u>				



Coldwater Heritage Partnership Grant
Final Report
June 25, 2014

X. References

Lackawanna River Corridor Association. (Nov 2001). LRCA.org. Lackawanna River Watershed Conservation Plan. Retrieved April 8, 2014

http://www.dcnr.state.pa.us/cs/groups/public/documents/document/DCNR_001596.pdf